

# Hour meters / timers, electronic

<b>LCD time modules</b>	<b>Max. time range 9999.99 h (DC)</b>	<b>194</b>
-------------------------	---------------------------------------	------------



The timer module of the type 194 for PCB mount features a 6-digit LCD display and 2 voltage ranges (4.75 ... 15 V DC and 9 ... 60 V DC).

It is extremely robust and suitable for many different applications thanks to its wide temperature range.



Timer	Supply voltage 4.75 ... 60 V	Input type PNP	High shock resistance	Temperature range -40°...+80°C	PCB mount	LCD display 6 LCDs	Electrical reset

### Powerful

- Display range up to 9999-99 hours.
- 6-digit LCD display, 6 mm high.
- Low power consumption.
- Wide voltage and temperature range.
- Very high shock and vibration resistance.

### Simple

- Non-volatile memory (no battery).
- Counting starts as soon as supply voltage is applied.
- Electrical reset.
- Very high reliability.
- Small size and low cost.

### Order specifications

Supply voltage	Order no.	Art.-No.	Delivery specification
4.75 ... 15 V DC	<b>6.194.012.F00</b>	162 137	· LCD hour meter module type 194
9 ... 60 V DC	<b>6.194.012.G00</b>	162 138	· Operating instructions

# Hour meters / timers, electronic

<b>LCD time modules</b>	<b>Max. time range 9999.99 h (DC)</b>	<b>194</b>
-------------------------	---------------------------------------	------------

## Technical data

### General technical data

<b>Display</b>	6 digits, LCD display, figure height 6 mm [0.24"]
<b>Display range</b>	9999.99 h
<b>Data backup</b>	CMOS EEPROM non-volatile memory up to 10 years
<b>Operating temperature</b>	-40 °C ... +85 °C [-40 °F ... +185 °F] (non-condensing)
<b>Working temperature</b>	-20 °C ... +80 °C [-4 °F ... +176 °F] (non-condensing)
<b>Storage temperature</b>	-50 °C ... +90 °C [-58 °F ... +194 °F]

### Electrical characteristics

<b>Supply voltage</b>	...F00	4.75 ... 15 V DC, with reverse polarity protection
	...G00	9 ... 60 V DC
<b>Current consumption</b>	...F00	8 mA at 4.75 ... 15 V DC
	...G00	6 mA at 9 ... 60 V DC

The module must be protected against inductive voltage spikes and high energy noise interference.

### Mechanical characteristics

<b>Housing</b>	color	black
<b>Weight</b>		approx. 8 g [0.28 oz]
<b>Shock resistance</b>	acc. to DIN-IEC 68-2-27	550 m/s <sup>2</sup> , 11 ms
<b>Vibration resistance</b>	acc. to DIN-IEC 68-2-6	50 ... 200 m/s <sup>2</sup> , 10 ... 80 Hz

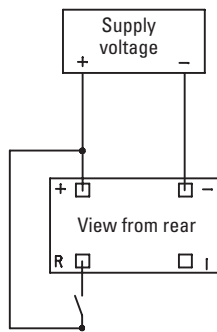
### Inputs

<b>Reset input</b>	HIGH	4 ... 60 V DC
	LOW	0 ... 0.7 V DC
	pulse length	min. 1 ms, edge triggered (rising)
<b>Measuring error</b>		a max. error of 36 sec. occur per Start/Stop cycle
<b>Accuracy (Quarz)</b>		max. 200 ppm 25 °C [+77 °F]

### Approvals

<b>CE compliant</b> in accordance with	EMC Directive	2014/30/EU
	RoHS Directive	2011/65/EU
<b>UKCA compliant</b> in accordance with	EMC Regulations	S.I. 2016/1091
	RoHS Regulations	S.I. 2012/3032

## Terminal assignment



## Dimensions

Dimensions in mm [inch]

