

# Preset counters, electronic

<b>LCD preset counters</b>	<b>1 or 2 presets – pulse, time – 5 kHz (AC+DC)</b>	<b>Codix 907 / 908</b>
----------------------------	---	------------------------



The pulse and time preset counters Codix 907 and 908 offer all important counter functions with an unbeatable price/performance ratio.

The counters offer easy, user-friendly installation thanks to their minimal installation depth and plug-in screw terminals; the 2-line LCD display is available with optional backlighting, making it even easier to read with just a quick glance.



<b>DC</b> 11 ... 30 V Supply voltage	<b>AC</b> 115 ... 230 V Supply voltage	<b>-10°...+50°C</b> Temperature range	<b>000000</b> DIN 48x48 DIN front bezel	<b>Prog</b> Menu-driven programming	<b>IP65</b> High protection level	<b>max.</b> 5 kHz Count frequency	<b>Plug-in screw terminal</b>	<b>1 or 2</b> Presets 907: 1 / 908: 2	<b>Multifunctional</b>
<b>123...</b> 2x6 LCDs LCD display	<b>12.6</b> Multicolor display								

### Powerful

- For pulse, time and position.
- Adding or subtracting.
- Automatic reset when preset is reached, or by key-press or electrically.
- Codix 907: 1 preset / Codix 908: 2 presets.
- 2 x 6-digit display and preset annunciators from -999999 to +999999.
- Display with or without backlighting, 2-color.

### Simple

- Plug-in screw terminal.
- Simple menu-driven programming.
- Decade keypad, for each digit one key.
- DC or AC powered.
- Minimum installation depth.
- High protection level (IP65) with integrated front bezel gasket.
- With preset annunciators.

<b>Order code</b>	<b>6.90</b>	<b>X</b>	<b>.</b>	<b>0</b>	<b>1</b>	<b>0</b>	<b>X</b>	<b>.</b>	<b>X</b>	<b>A</b>	<b>0</b>
	<b>a</b>				<b>b</b>	<b>c</b>			<b>d</b>	<b>e</b>	

#### **a** Number of presets

- 7 = 1 preset
- 8 = 2 presets

#### **b** Outputs

- 0 = relays

#### **c** LCD version

- 0 = no backlighting
- 1 = green backlighting
- 4 = 2-color, negative red / green backlighting

#### **d** Supply voltage

- 0 = 230 V AC
- 1 = 115 V AC
- 3 = 11 ... 30 V DC

#### **e** Input trigger level

- A = 4 ... 30 V DC level

#### Delivery specification

- Preset counter
- Mounting clip
- 8 pin screw terminal
- 7 pin screw terminal
- Operating instructions

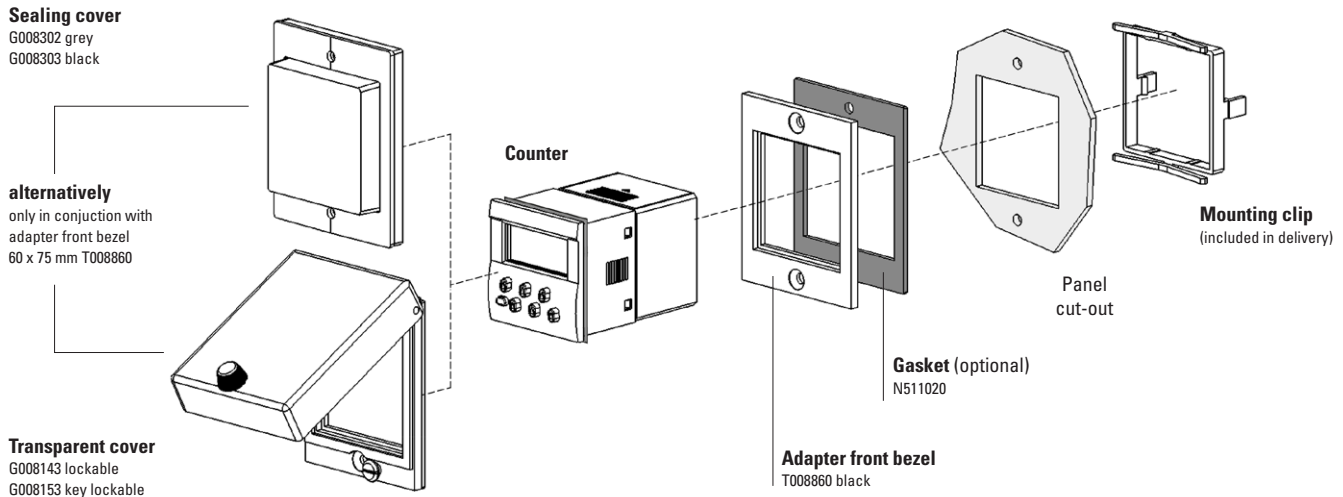
#### Stock types

- 6.907.0100.3A0
- 6.908.0100.3A0
- 6.908.0101.3A0
- 6.907.0100.0A0
- 6.908.0100.0A0
- 6.908.0101.0A0

# Preset counters, electronic

**LCD preset counters**      **1 or 2 presets – pulse, time – 5 kHz (AC+DC)**      **Codix 907 / 908**

## Accessories / Mounting examples



		Type / size	Description		Order no.	suitable gasket
<b>Adapter front bezel</b>		<b>55 x 55 mm</b> <b>[2.17 x 2.17]</b>	for cut-out 50 x 50 mm [1.97 x 1.97"] or ø 50,5 mm [1.99"] to cut-out 45 x 45 mm [1.77 x 1.77"]	grey black	<b>T008170</b> <b>T008171</b>	<b>N511017</b>
		<b>55 x 55 mm</b> <b>[2.17 x 2.17]</b>	for cut-out 50 x 50 mm [1.97 x 1.97"] to cut-out 45 x 45 mm [1.77 x 1.77"]	black	<b>T008853</b>	<b>N511004</b>
		<b>60 x 75 mm</b> <b>[2.36 x 2.95]</b>	for cut-out 50 x 50 mm [1.97 x 1.97"] to cut-out 45 x 45 mm [1.77 x 1.77"]	black	<b>T008860</b>	<b>N511020</b>
		<b>72 x 72 mm</b> <b>[2.83 x 2.83]</b>	for cut-out 68 x 68 mm [2.68 x 2.68"] to cut-out 45 x 45 mm [1.77 x 1.77"]	grey black Mating clip	<b>T008176</b> <b>T008177</b> <b>T009420</b>	<b>N511016</b>
		<b>ø 72 mm</b> <b>[2.83]</b>	for cut-out ø 60 mm [2.36"] to cut-out 45 x 45 mm [1.77 x 1.77"]	black	<b>N510226</b>	–
<b>Sealing cover IP65</b>		<b>K2</b>	only in conjunction with adapter front bezel 60 x 75 mm T008860	transparent / grey	<b>G008302</b>	–
				transparent / black	<b>G008303</b>	–
<b>Transparent cover IP65</b>		<b>2 Dv</b> (mounted on bezel)	cover lockable, for cut-out 50 x 50 [1.97 x 1.97], only in conjunction with adapter front bezel 60 x 75 mm T008860	transparent / black	<b>G008143</b>	–
		<b>2 Dvs</b> (mounted on bezel)	cover key lockable, for cut-out 50 x 50 [1.97 x 1.97], only in conjunction with adapter front bezel 60 x 75 mm T008860	transparent / black	<b>G008153</b>	–
<b>Mounting frame</b>		<b>cut-out</b> <b>50 x 50 mm</b> <b>[2.36 x 2.36]</b>	for snap-on mounting on 35 mm [1.38"] top-hat DIN rail	chromated	<b>G300003</b>	
<b>Screw terminal (replacement part)</b>			1 ... 8, pitch 3.81 9 ... 15, pitch 5.08	8-pin	<b>N100498</b>	
				7-pin	<b>N100548u002</b>	

incl. in delivery

# Preset counters, electronic

<b>LCD preset counters</b>	<b>1 or 2 presets – pulse, time – 5 kHz (AC+DC)</b>	<b>Codix 907 / 908</b>
----------------------------	---	------------------------

## Technical data

General technical data	
<b>Display</b>	2 line 2 x 6 digits LCD display upper line 9 mm [0.35"], lower line 7 mm [0.28"], special sign 2 mm high [0.079"] standard positive green with optional backlighting 2-color upper line: negative, red backlighting lower line: negative, green backlighting
<b>Operating temperature</b>	-10 °C ... +50 °C [+14 °F ... +122 °F] (non-condensing)
<b>Storage temperature</b>	-25 °C ... +75 °C [-13 °F ... +167 °F]
<b>Relative humidity at +40 °C [+104 °F]</b>	93 % (non-condensing)
<b>Altitude</b>	up to 2000 m [6562']

Mechanical characteristics	
<b>Protection</b>	IP65 (front side)
<b>Weight</b>	AC version approx. 250 g [8.82 oz] DC version approx. 150 g [5.29 oz]

Electrical characteristics	
<b>Sensor supply voltage</b>	AC 115/230 V, ±10 %, 50/60 Hz, max. 6.5 VA DC 11 ... 30 V, max. 4 W
<b>External fuse protection</b>	230 V AC T 0.1 A 115 V AC T 0.125 A 11 ... 30 V DC T 0.2 A
<b>Data retention</b>	> 10 years, EEPROM
<b>Input modes</b>	pulse counter cnt.dir, up.dn, quad timer FrErun, InpA.InpB., InpB.InpB.
<b>Sensor supply voltage</b>	AC supply 24 V DC -40/+15 %, 50 mA at 230 V AC, 40 mA at 115 V AC DC supply max. 50 mA external supply voltage is connected through
<b>Device safety</b>	designed to EN 61010 part 1 protection class 2 application area pollution level 2

Inputs	
<b>Count inputs</b>	A and B (timer: A = Gate)
<b>Polarity of the inputs</b>	programmable for all inputs in common, NPN/PNP
<b>Input resistance</b>	10 kΩ
<b>Count frequency</b>	max. 5 kHz (details see manual) can be damped to 30 Hz (mechanical contacts)
<b>Control / Reset input</b>	Lock, Reset
<b>Min pulse duration of signal and control inputs</b>	statical / 1 ms
<b>Switching levels with AC/DC supply</b>	4 ... 30 V DC: low 0 ... 2 V DC high 3.5 ... 30 V DC
<b>Pulse shape</b>	variable, Schmitt-Trigger characteristics

Outputs	
<b>Switching voltage</b>	max. 250 V AC / 110 V DC
<b>Switching current</b>	max. 3 A AC/DC min. 30 mA DC
<b>Switching capacity</b>	max. 750 VA / 90 W
<b>Output 1</b>	Mech. service life (switching cycles) 2 x 10 <sup>7</sup> N° of switching cycles at 3 A / 250 V AC 1 x 10 <sup>5</sup> N° of switching cycles at 3 A / 30 V DC 1 x 10 <sup>5</sup> Relay with closing contact, progr. normal closed or normal open.
<b>Output 2</b>	Mech. service life (switching cycles) 20 x 10 <sup>6</sup> N° of switching cycles at 3 A / 250 V AC 5 x 10 <sup>4</sup> N° of switching cycles at 3 A/30 V DC 5 x 10 <sup>4</sup> Relay with changeover contact
<b>Reaction time of the outputs</b>	pulse counter < 15 ms timer < 10 ms

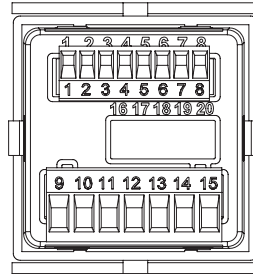
Approvals	
<b>CE compliant</b> in accordance with	EMC Directive 2014/30/EU RoHS Directive 2011/65/EU Low Voltage Directive 2014/35/EU
<b>UKCA compliant</b> in accordance with	EMC Regulations S.I. 2016/1091 RoHS Regulations S.I. 2012/3032 Low Voltage Regulations S.I. 2016/1101

# Preset counters, electronic

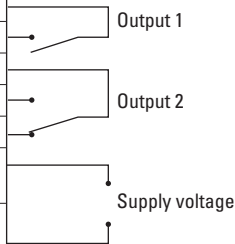
<b>LCD preset counters</b>	<b>1 or 2 presets – pulse, time – 5 kHz (AC+DC)</b>	<b>Codix 907 / 908</b>
----------------------------	---	------------------------

## Terminal assignment

Pin	Signal and control inputs
1	Sensor supply voltage
2	GND (0 V DC)
3	INP A (Signal input A)
4	INP B (Signal input B)
5	RESET (Reset input)
6	LOCK (Key locking input)
7	n. c.
8	n. c.



Pin	Version with relays
9	Relay contact C.
10	Relay contact N.O.
11	Relay contact C.
12	Relay contact N.O.
13	Relay contact N.C.
14	AC: 115/230 V AC N~ DC: 11 ... 30 V DC
15	AC: 115/230 V AC L~ DC: GND (0 V DC)



## Dimensions

Dimensions in mm [inch]

