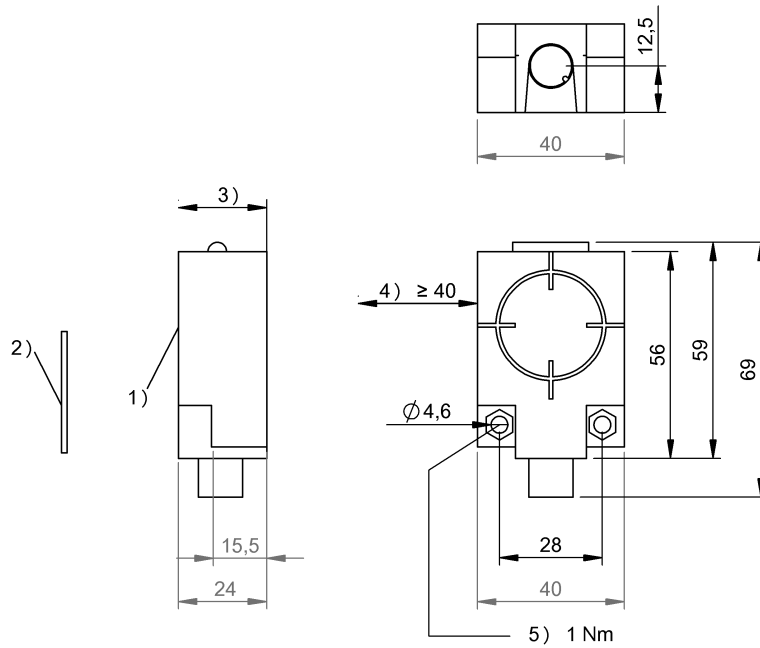


HF (13.56 MHz)

BIS M-410-068-001-02-S115

訂購代碼: BIS00W3

BALLUFF



1) 感應面, 2) 數據載體, 3) 緩衝區, 4) 緩衝區, 環繞, 5) 擰緊力矩



Basic features

| | |
|----------|-----------------------------|
| EN 55011 | 組別 1, 等級 A |
| 功能原理 | 讀寫器 |
| 天線形狀 | 圓形 |
| 認證 | CE UKCA cULus WEEE |

Display/Operation

| | |
|------|--|
| 功能顯示 | COM 區, LED 黃色 RF 欄位, LED 紅色 Power (AN), LED 綠色 |
|------|--|

Electrical connection

| | |
|----|--------------------------------|
| 接口 | (RS422 / 電壓供應) : M12x1 插頭, 8 針 |
|----|--------------------------------|

Electrical data

| | |
|----------------|-------------|
| 24 V DC 時最大耗電量 | 150 mA |
| 工作電壓 U_b | 10 - 30 VDC |
| 餘波, 最大 | 包含 |

Environmental conditions

| | |
|---------------------|---------------|
| Area of operation | Indoor |
| EN 60068-2-27, 衝擊 | 是 |
| EN 60068-2-32, 自由落體 | 是 |
| EN 60068-2-6, 振動 | 是 |
| 倉儲溫度 | -20...70 °C |
| 受污程度 | 2 |
| 持續衝擊作用 | 是 |
| 最大高度位置 | 2000 m |
| 環境溫度 | -20...50 °C |
| 相對空氣濕度 | 0 - 90 %, 不凝結 |
| 防護等級 | IP67 |

HF (13.56 MHz)

BIS M-410-068-001-02-S115

訂購代碼: BIS00W3

BALLUFF

Functional Characteristics

| | |
|-----------|--------------------------------|
| 支援的數據載體類型 | DIN ISO 14443 DIN ISO 15693 |
|-----------|--------------------------------|

Interface

| | |
|----|-------|
| 介面 | RS422 |
|----|-------|

Material

| | |
|------|--------------|
| 外殼材質 | PC, 含 PU 灌封膠 |
|------|--------------|

Mechanical data

| | |
|------|-----------------|
| 安裝 | 無金屬 (緩衝區) |
| 尺寸 | 40 x 24 x 56 mm |
| 應用重量 | 66.00 g |

Remarks

This device is intended to be supplied by a UL-listed or CSA-certified power supply unit with "Class 2" or LPS power source.

The devices must be installed permanently.

1. Determine a suitable mounting position.

2. Fasten the device with suitable mounting material.

The device can be cleaned with a slightly damp cloth.

Regularly check the function of the device and all associated components through visual and functional tests.

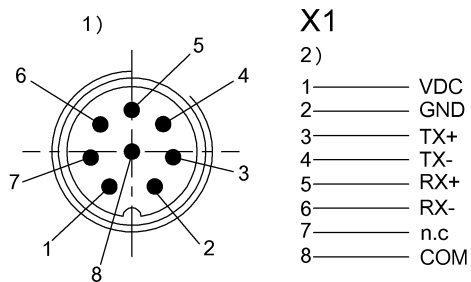
- Shut down the device in the event of malfunctions.

- Secure the system against unauthorized use.

- Check fastening and tighten if necessary.

The product is maintenance-free.

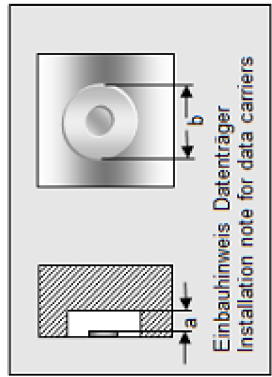
Connector Drawings



Help Views

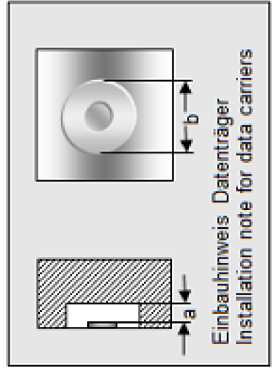
BIS M-410-__

| | BIS M-130-03/L | BIS M-130-07/L | BIS M-131-10/L | BIS M-132-03/L | BIS M-132-03/L-HT |
|---|----------------|----------------|----------------|----------------|-------------------|
| passende Datenträger Appropriate data carriers | | | | | |
| Abstand Datenträger zu Metall in mm (a) Data carrier distance to metal in mm | >10 | >10 | >10 | >25 | >25 |
| Freizone Datenträger in mm (b) Data carrier clear zone in mm | >60 | >60 | >60 | >100 | >100 |
| Schreibabstand in mm Write distance in mm | 0-17 | 0-12 | 0-5 | 0-48 | 0-40 |
| Lesabstand in mm Read distance in mm | 0-17 | 0-12 | 0-5 | 0-48 | 0-40 |
| Versatz in mm bei Abstand von | 0 ±15 | ±12 | ±10 | ±30 | ±25 |
| | 2 ±15 | ±12 | ±10 | ±30 | ±25 |
| | 4 ±15 | ±12 | ±7,5 | ±30 | ±25 |
| | 5 ±15 | ±12 | ±5 | ±30 | ±25 |
| | 10 ±14 | ±10 | | ±30 | ±25 |
| | 12 ±12 | ±5 | | ±25 | ±20 |
| | 15 ±12 | | | ±25 | ±20 |
| | 17 ±7 | | | ±25 | ±20 |
| | 20 | | | ±25 | ±20 |
| | 25 | | | ±25 | ±20 |
| | 30 | | | ±25 | ±20 |
| | 35 | | | ±20 | ±12 |
| | 40 | | | ±20 | ±12 |
| | 45 | | | ±12 | |
| | 48 | | | ±12 | |
| | 75 | | | | |
| | 80 | | | | |
| | 85 | | | | |
| | 90 | | | | |
| | 95 | | | | |
| | 100 | | | | |



BIS M-410-__

| | BIS M-132-10/L | BIS M-132-10/L-HT | BIS M-133-02/A | BIS M-134-10/L | BIS M-134-10/L-HT |
|---|----------------|-------------------|----------------|----------------|-------------------|
| passende Datenträger Appropriate data carriers | | | | | |
| Abstand Datenträger zu Metall in mm (a) Data carrier distance to metal in mm | >25 | >25 | >25 | >50 | >50 |
| Freizone Datenträger in mm (b) Data carrier clear zone in mm | >100 | >100 | >100 | >150 | >150 |
| Schreibabstand in mm Write distance in mm | 0-15 | 0-15 | 0-32 | 0-32 | 0-36 |
| Lesabstand in mm Read distance in mm | 0-15 | 0-15 | 0-32 | 0-32 | 0-36 |
| Versatz in mm bei Abstand von | 0 ±15 | 0 ±15 | 0 ±20 | 0 ±22 | 0 ±25 |
| Offset in mm at distance | 5 ±15 | 5 ±15 | 5 ±20 | 5 ±22 | 5 ±25 |
| | 10 ±12 | 10 ±12 | 10 ±16 | 10 ±20 | 10 ±25 |
| | 15 ±8 | 15 ±8 | 15 ±16 | 15 ±20 | 15 ±25 |
| | 20 | 20 | 20 | 20 | 20 |
| | 25 | 25 | 25 | 25 | 25 |
| | 30 | 30 | 30 | 30 | 30 |
| | 32 | 32 | 32 | 32 | 32 |
| | 36 | 36 | 36 | 36 | 36 |
| | 40 | 40 | 40 | 40 | 40 |
| | 45 | 45 | 45 | 45 | 45 |
| | 50 | 50 | 50 | 50 | 50 |
| | 55 | 55 | 55 | 55 | 55 |
| | 60 | 60 | 60 | 60 | 60 |
| | 65 | 65 | 65 | 65 | 65 |
| | 68 | 68 | 68 | 68 | 68 |
| | 75 | 75 | 75 | 75 | 75 |
| | 80 | 80 | 80 | 80 | 80 |
| | 85 | 85 | 85 | 85 | 85 |
| | 90 | 90 | 90 | 90 | 90 |
| | 95 | 95 | 95 | 95 | 95 |



BIS M-410-__

| | BIS M-135-02/L | BIS M-135-03/L | BIS M-135-03/L- HT | BIS M-135-07/L | BIS M-135-07/L- HT |
|---|--|--|--|--|--|
| passende Datenträger Appropriate data carriers | | | | | |
| Abstand Datenträger zu Metall in mm (a) Data carrier distance to metal in mm | >50 | >50 | >50 | >50 | >50 |
| Freizone Datenträger in mm (b) Data carrier clear zone in mm | >150 | >150 | >150 | >150 | >150 |
| Schreibabstand in mm Write distance in mm | 0-60 | 0-68 | 0-70 | 23-46 | 23-46 |
| Leseabstand in mm Read distance in mm | 0-60 | 0-68 | 0-70 | 23-46 | 23-46 |
| Versatz in mm bei Abstand von | 0 5 10 15 20 23 30 32 35 40 46 50 55 60 | ±35 ±40 ±40 ±40 ±40 ±40 ±32 ±32 ±32 ±32 ±32 ±24 ±24 ±16 | ±44 ±44 ±44 ±44 ±44 ±32 ±32 ±32 ±32 ±32 ±25 ±25 ±15 ±15 | ±24 ±24 ±18 ±18 ±18 ±10 | ±24 ±24 ±18 ±18 ±18 ±10 |
| Offset in mm at distance | 65 68 70 80 85 90 95 | | | | |

