

SUL 181 h 12V

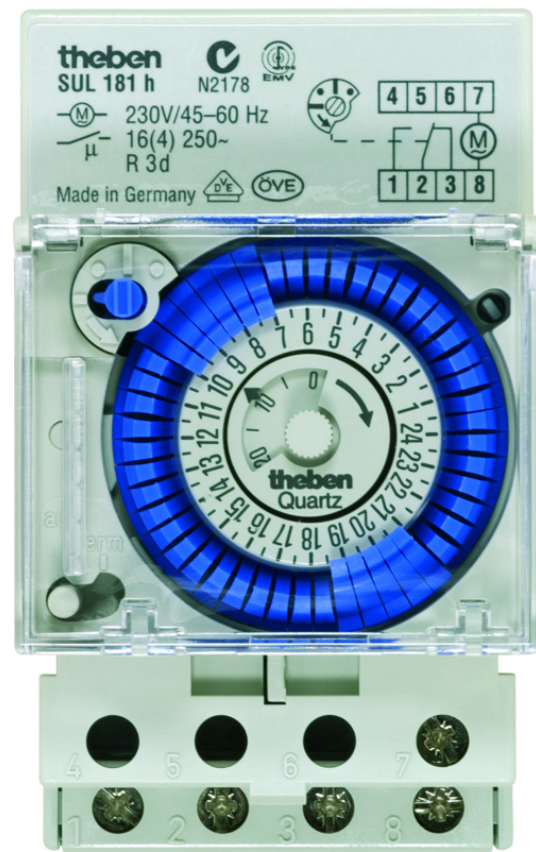
Item no.: 1817008

theben

Time and light control Analogue time switches

Description

- Analogue time switch
- 1 channel
- Daily program
- With power reserve (NiMH rechargeable battery)
- Synchronised with mains
- Shortest switching time: 30 minutes
- Simple summer/winter time correction
- Time can be changed clockwise or anti-clockwise
- 48 switching segments
- Screw terminals
- Switching preselection
- Permanent ON/OFF switch
- Switching status display
- Operation control display



Technical data

SUL 181 h 12V	
Operating voltage	12 V UC
Frequency	50 – 60 Hz
Number of channels	1
Width	3 modules
Installation type	DIN rail
Type of connection	Screw terminals
Drive	Quartz-controlled stepper motor
Program	Daily program
Power reserve	3 days
Switching capacity at 250 V AC, cos φ = 1	16 A

SUL 181 h 12V	
Switching capacity at 250 V AC, cos φ = 0,6	4 A
Shortest switching times	30 min
Programmable every	30 min
Time accuracy at 25 °C	$\leq \pm 1$ s/day (quartz)
Type of contact	Changeover contact
Switching output	Potential-free and phase-independent
Number of switching segments	48
Stand-by consumption	~0.1 W

Subject to technical changes and misprints

additional information at: www.theben.de/product/1817008

The load data are determined with exemplary selected illuminants and are therefore typical data due to the large number of available products.

SUL 181 h 12V

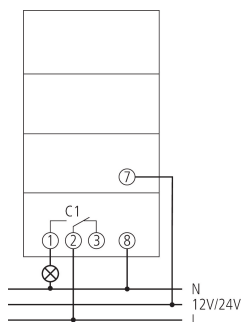
Item no.: 1817008



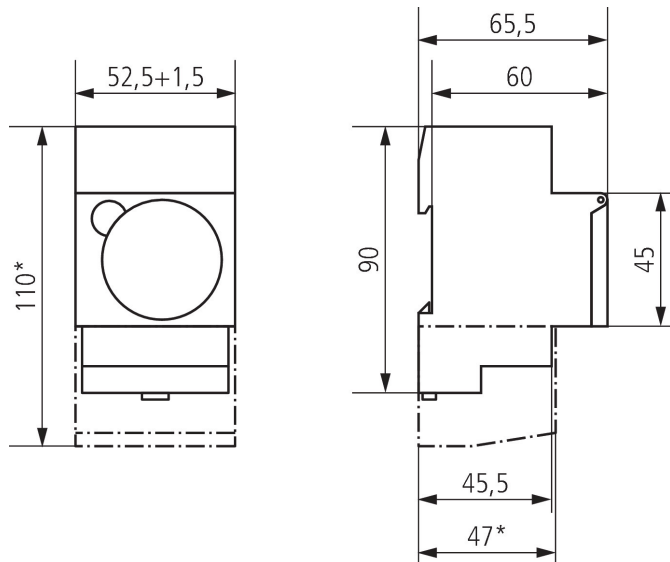
Technical data

SUL 181 h 12V		SUL 181 h 12V	
Housing and insulation material	High-temperature resistant, self-extinguishing thermoplastic	Protection class	II according to EN 60 730-1
Type of protection	IP 20	Ambient temperature	-20°C ... 50°C

Connection example



Scale drawings



Subject to technical changes and misprints

additional information at: www.theben.de/product/1817008

The load data are determined with exemplary selected illuminants and are therefore typical data due to the large number of available products.

05/08/2022

Page 2 of 3

SUL 181 h 12V

Item no.: 1817008

theben

Accessories

Terminal cover 52,5 mm

Item no.: 9070061



Front panel kit

Item no.: 9070001



Subject to technical changes and misprints

additional information at: www.theben.de/product/1817008

The load data are determined with exemplary selected illuminants and are therefore typical data due to the large number of available products.

05/08/2022

Page 3 of 3