

Time and light control
Analogue time switches

Description

- Analogue time switch
- Daily program
- 2 channels
- Fine adjustment to set the time to the minute
- Shortest switching time: 30 minutes
- 10 tappets included in delivery
- With power reserve (NiMH rechargeable battery)
- Quartz controlled
- Tappets
- Screw terminals
- Switching status display
- Operating indication



Technical data

	SUL 188 g
Operating voltage	230 V AC
Frequency	45 – 60 Hz
Number of channels	2
Width	3 modules
Installation type	DIN rail
Type of connection	Screw terminals
Drive	Quartz-controlled stepper motor
Program	Daily program
Power reserve	3 days
Switching capacity at 250 V AC, $\cos \varphi = 1$	10 A

	SUL 188 g
Switching capacity at 250 V AC, $\cos \varphi = 0,6$	4 A
Shortest switching times	30 min
Programmable every	15 min
Time accuracy at 25 °C	$\leq \pm 1$ s/day (quartz)
Type of contact	Changeover contact
Switching output	Potential-free and phase-independent
Stand-by consumption	0.5 W
Test approval	VDE

Subject to technical changes and misprints

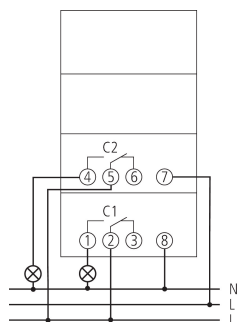
additional information at: www.theben.de/product/1880033

The load data are determined with exemplary selected illuminants and are therefore typical data due to the large number of available products.

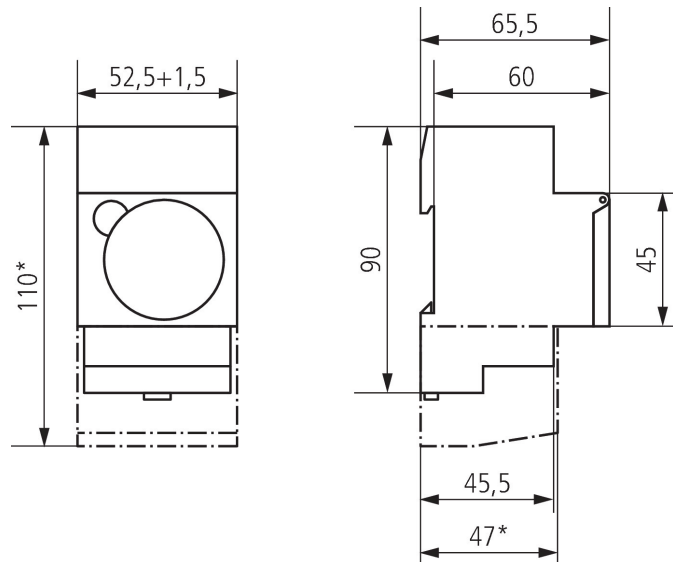
Technical data

SUL 188 g		SUL 188 g	
Housing and insulation material	High-temperature resistant, self-extinguishing thermoplastic	Protection class	II according to EN 60 730-1
Type of protection	IP 20	Ambient temperature	-20°C ... 55°C

Connection example



Scale drawings



SUL 188 g

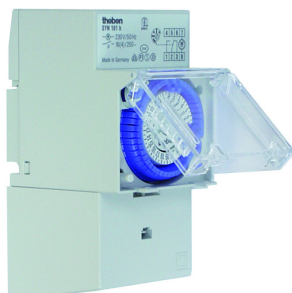
Item no.: 1880033



Accessories

Terminal cover 52,5 mm

Item no.: 9070061



Front panel kit

Item no.: 9070001



Subject to technical changes and misprints

additional information at: www.theben.de/product/1880033

The load data are determined with exemplary selected illuminants and are therefore typical data due to the large number of available products.